

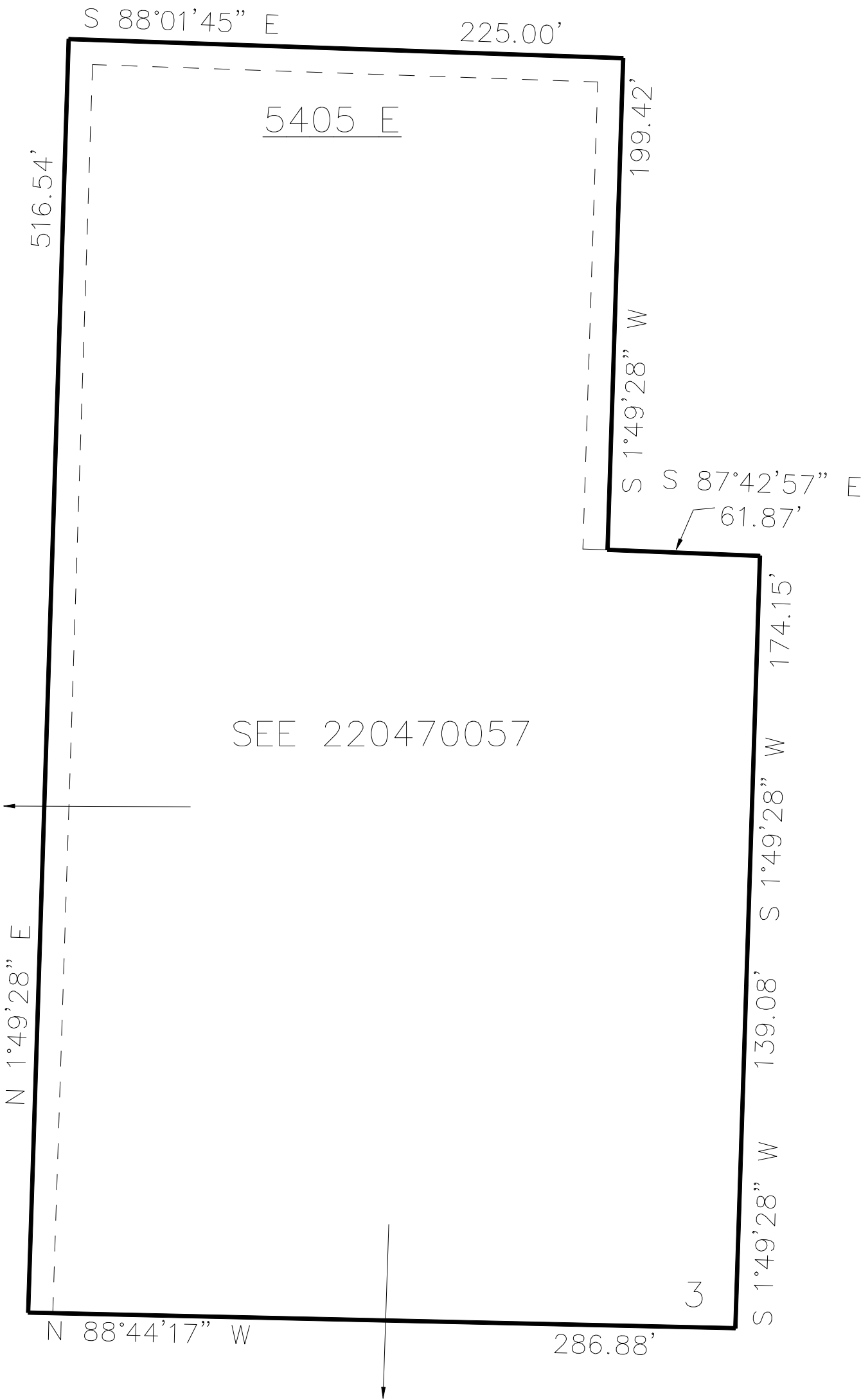
PART OF THE SE. 1/4, OF SECTION 34, T.7N., R.1E., S.L.B. & M.
PELICAN BLUFF SUBDIVISION 1ST AMENDMENT

357

TAXING UNIT: 28

IN WEBER COUNTY
SCALE 1" = 50'

2200 NORTH



SEE PAGE 47

SEE 220470057

SEE PAGE 47

10' UTILITY & DRAINAGE EASEMENTS EACH
SIDE OF PROPERTY LINES AS INDICATED
BY DASHED LINES EXCEPT AS OTHERWISE
SHOWN.

FOR COMPLETE ENG DATA SEE
ORIGINAL DEDICATION PLAT IN
BOOK 84, PAGE 15 OF RECORDS.